



Judit Csakvari  
clinical psychologist  
Eotvos Lorand University  
Budapest, Hungary  
csakvarijudit@gmail.com

## Experiences of a Research – some results\*

Implementation of modern diagnostic and remedial approaches among Individuals  
with special needs and serious, multiple impairments

Third European Conference on Psychology and Visual Impairment - 2010  
Vilnius, Lithuania

\*supported by OTKA grant No. 61463

## Psychological Aspects of Multiply Disability (with VI)

- Theoretical basis
  - the social inclusion of seriously multiply handicapped individuals is hindered.
  - the reasons for this among others are the absence of relevant assessment material, which were designed for the specialities of this certain group
- Aim:
  - naturalisation and dissemination of new diagnostic batteries, approaches and experiences in Hungary.
- Outcome:
  - development of a new assessment protocol
  - produce new special educational scientific knowledge as a result in the field of seriously multiply handicapped people (mostly MDVI)

## Theoretical framework

Important factors in seriously MD and MDVI


- New points of view
  - Development emphasis – Life span
  - Inclusion emphasis - Social adaptation
  - Ecological (Bronfenbrenner's model) emphasis – Parenting and environment

## New Assessment Tools

- Development ⇔ Battelle Developmental Inventory-2nd Ed.
- Social adaptation ⇔ Scales of Independent Behavior-Revised
- Personal environment ⇔ Parenting Stress Index-3rd Ed.

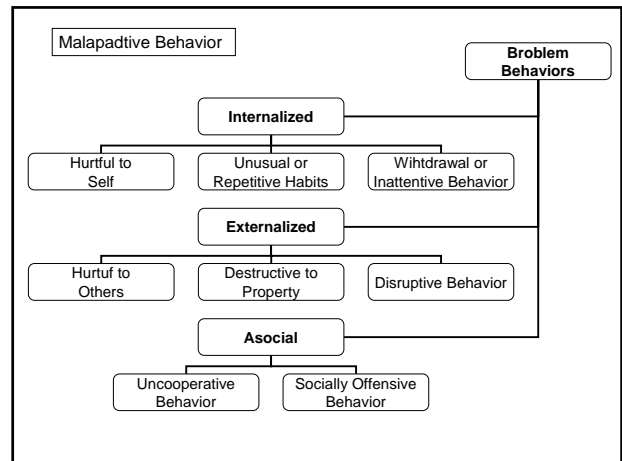
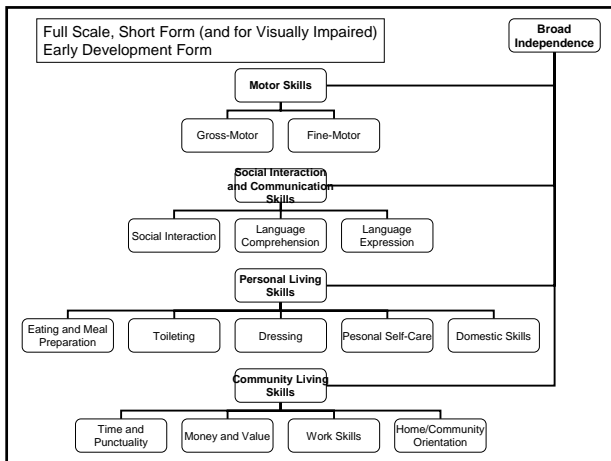
## Battelle Developmental Inventory- 2nd Ed. (BDI-2)

- Standardized (USA)
- Individually administered
- Birth to 7;11 years of age
- Effective measuring of functional abilities
- 5 domains, 13 subdomains
  - Adaptive
  - Personal-Social
  - Communication
  - Motor
  - Cognitive
- BDI-2 Screening Test also available
- Effective use by: speech pathologist, clinical psychologist, adaptive physical education specialist, clinical diagnostician and health care professional

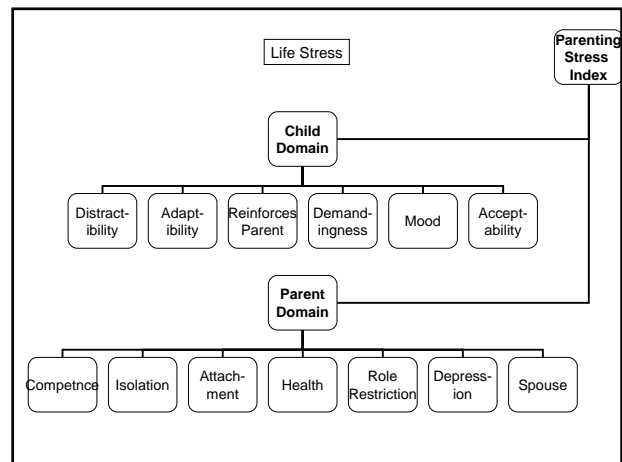


## Scales of Independent Behavior- Revised (SIB-R)

- Comprehensive measure of adaptive and problem behavior
- Measure functional independence and adaptive functioning in school, home, employment and community settings
- Provides extensive information for assessing adaptive strengths and service needs



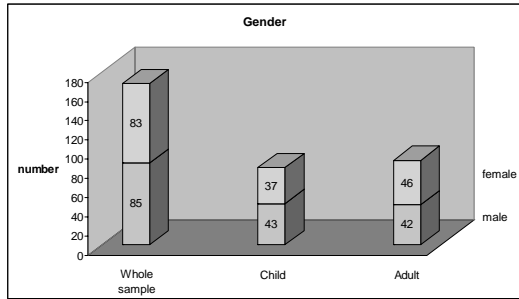
- ### Parenting Stress Index-3rd Ed. (PSI)
- Identification of stressful parent-child system
  - 'At Risk Screening Tool'
  - Contains 120 test items and 19 Life Stress items
  - Clinical groups for which PSI Mean Profiles are presented:
    - H/V/M/L Impaired
    - DD, DS, CP, ADHA, ADD
    - Multihandicapped
    - Heart Disease, Intra-vent. hemorrhage, Apnea
    - Child abuse, Maternal depression



- ### METHOD
- #### *Participants*
- Heterogeneity of the sample
    - age, character of the atypical development, environment, socio-economic status, education services (if has)
  - Of the 168 focal persons, 48% were children (n = 80) 52% were adults (n = 88)
  - They ranged in age from 34 months to 855 months (71 yrs)
  - Missing earlier information (mostly in the adult sample)

- ### Description statistic
- Gender
  - Age
  - Type of disability/disabilities
  - Premature birth
  - Institute/family
  - Chronic disease
  - Medical aid

### Gender



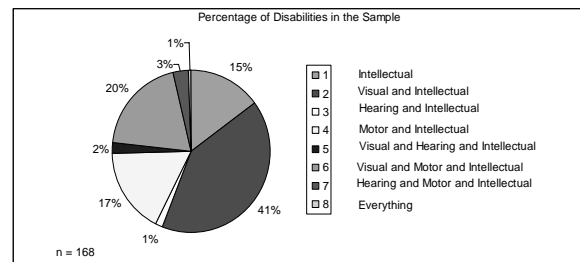
### Age – Children (n = 80)

	month	year; month
mean	113	9;5
SD	44	3;8
min	34	2;10
max	211	17;7

### Age – Adults (n = 88)

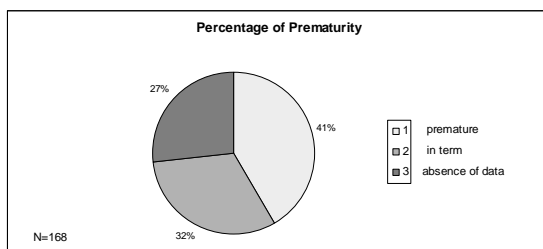
	month	year; month
mean	387	32;3
SD	149	12;5
min	217	18;1
max	855	71;3

### Disabilities



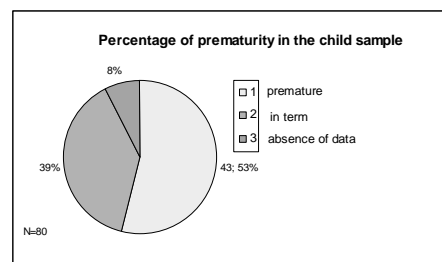
63% of the participants were visually impaired with additional disabilities

### Prematurity



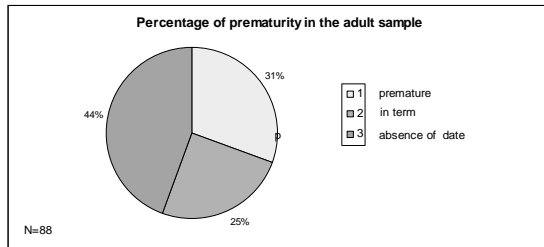
### Prematurity

- Child

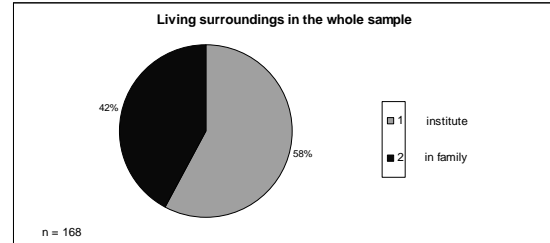


## Prematurity

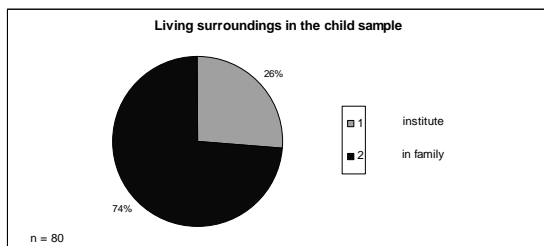
- Adult



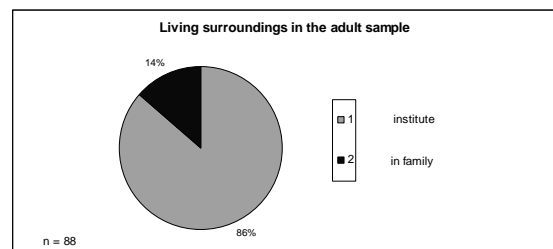
## Living surroundings



## Child



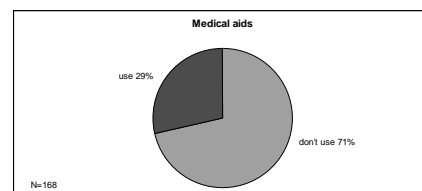
## Adult



## Chronic disease

- On the whole sample, 50% of the participants have some kind of chronic disease
- Epilepsy is the most common
- Some informators don't know exactly what is chronic diseases
- Occurent chronic disease:
  - epilepsy, strabism, psoriasis, diabetes, asthma, hypertone, shunt, glucose intolerance, lactose intolerance, etc.

## Medical Aid



Types of medical aids:  
orthopaedic shoe, sitting module, glasses, hearing aid, rack, special pram, wheel-chair, cohlea implantation

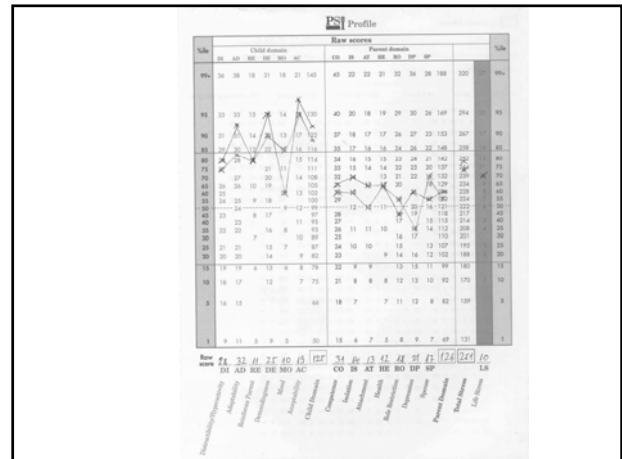
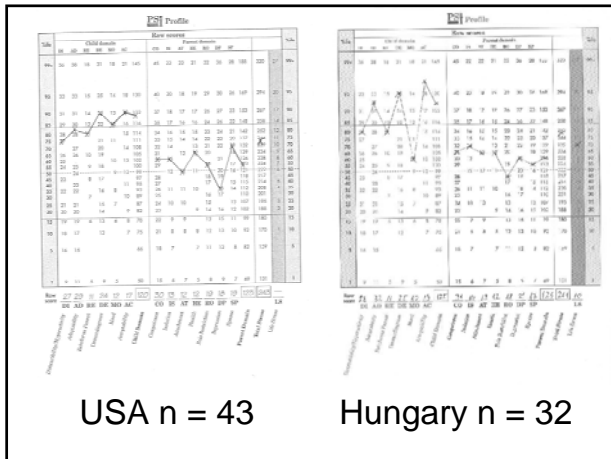
### Measures

Assessment tools	Number
PSI	32
BDI-2	35
SIB-R Early Form	47
SIB-R Full Scale	121
Summa	235

### RESULTS

PSI – Parenting Stress Index

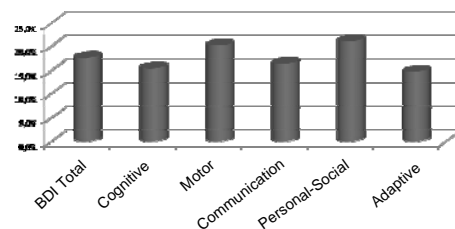
- 28 mothers és 4 fathers
- Low rate of response
- Not easy to understand some items
- Important assessment way in the psychology of special education
- Similar profiles of the American and Hungarian parents of multihandicapped children
- The stress level is higher in the Hungarian sample, except Mood (in Ch D)



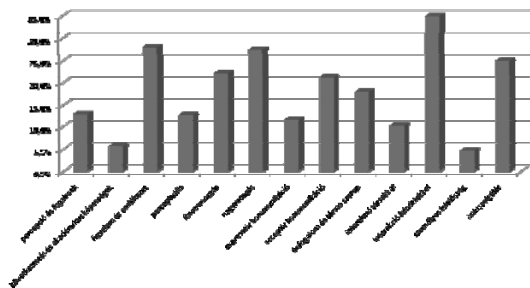
### Special questions about BDI-2 and SIB-R

- Adaptation needs
  - Special procedure of the assessment
  - Criteria-referenced evaluation
    - The way from raw score to standard score doesn't work (norm-referenced)
    - There are no differences with this method among the participants
  - Age-equivalent Score

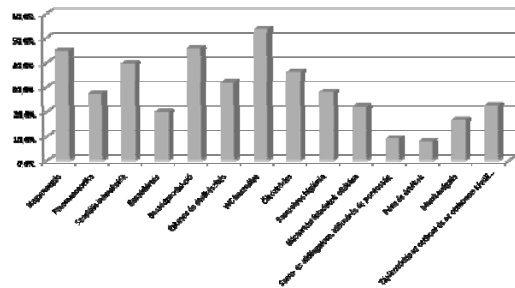
### Battelle Developmental Inventory



### Battelle Developmental Inventory



### Scales of Independent Behavior (SIB-R)



### Correlation between BDI-2 and SIB-R Early Form

	SIB-R Early form - Broad Independent
BDI total	0,697**
Cognitive	0,570**
Motor	0,776**
Communication	0,551**
Personal-social	0,550**
Adaptive	0,725**

Thank you!