



6 april 2010

Visio 

## Visual impairment, ICF and Psychology

**Peter Verstraten**  
Senior Project Manager / Science Coordinator  
Licensed Healthcare Psychologist

## Scheme of presentation

- General introduction ICF
- ICF in the field of visual impairment
- ICF and and psychology
- Exchange and discussion

## Why a classification system?

- To provide a systematic coding scheme for health information systems
- To permit comparison of data across:
  - Countries
  - Health care disciplines
  - Services
  - Time
- To provide a scientific basis for consequences of health conditions
- To establish a common language to improve communication

## Useful for



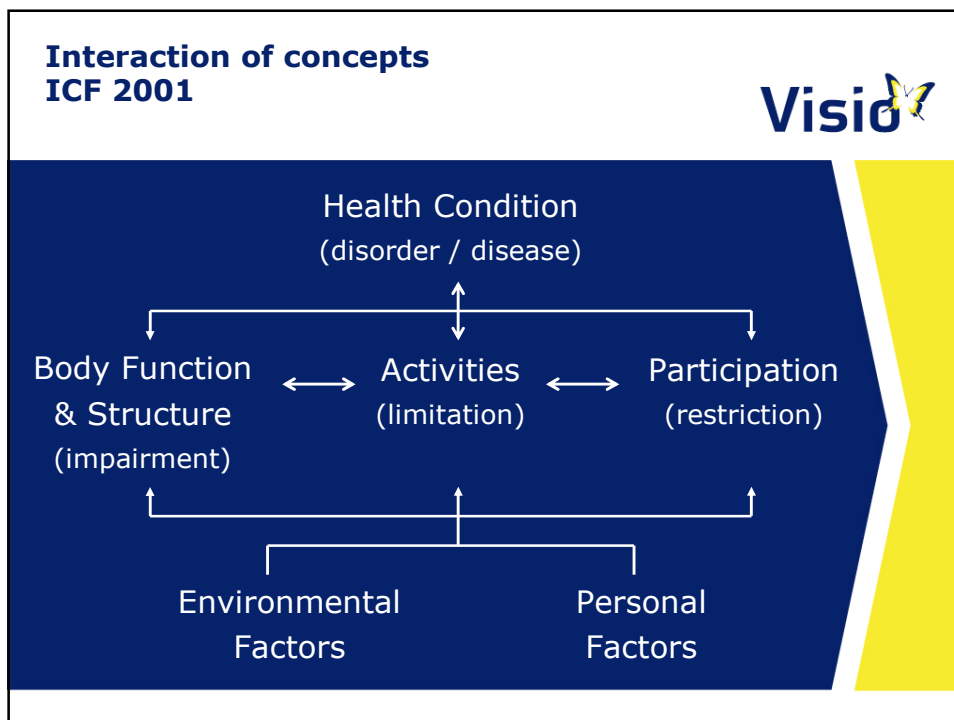
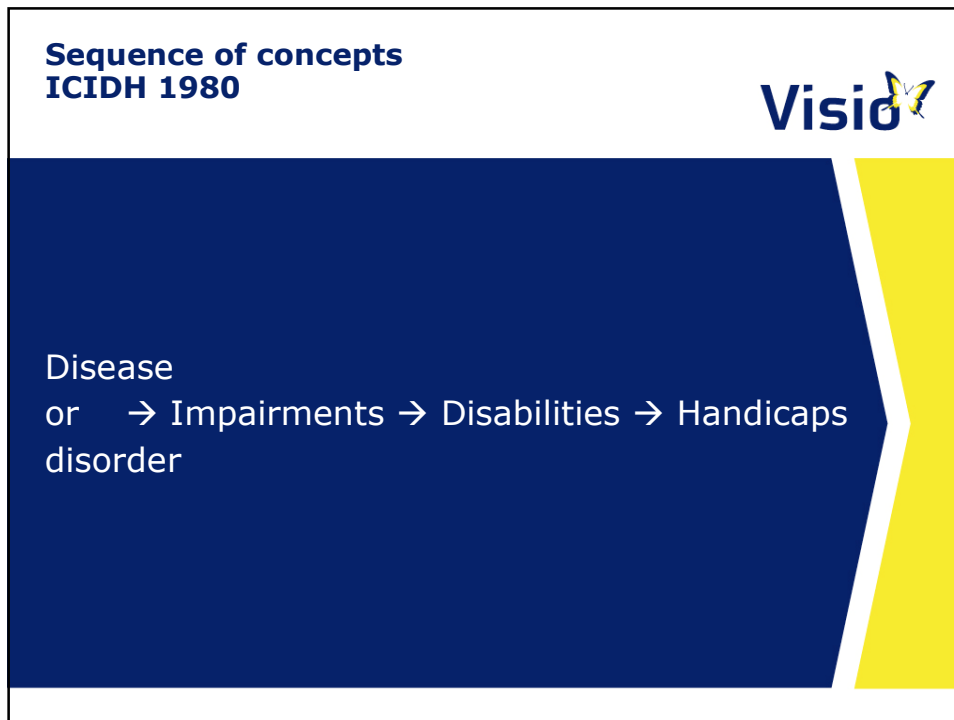
- Assessing the request and needs of the client
- Formulating rehabilitation goals
- Drawing up the rehabilitation plan
- Evaluating results

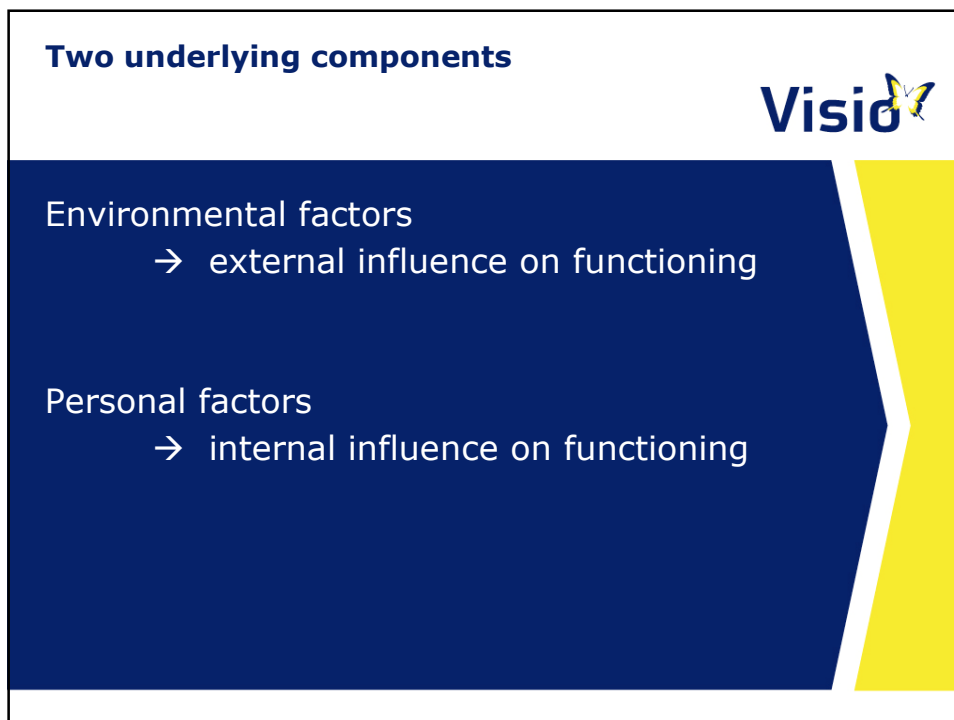
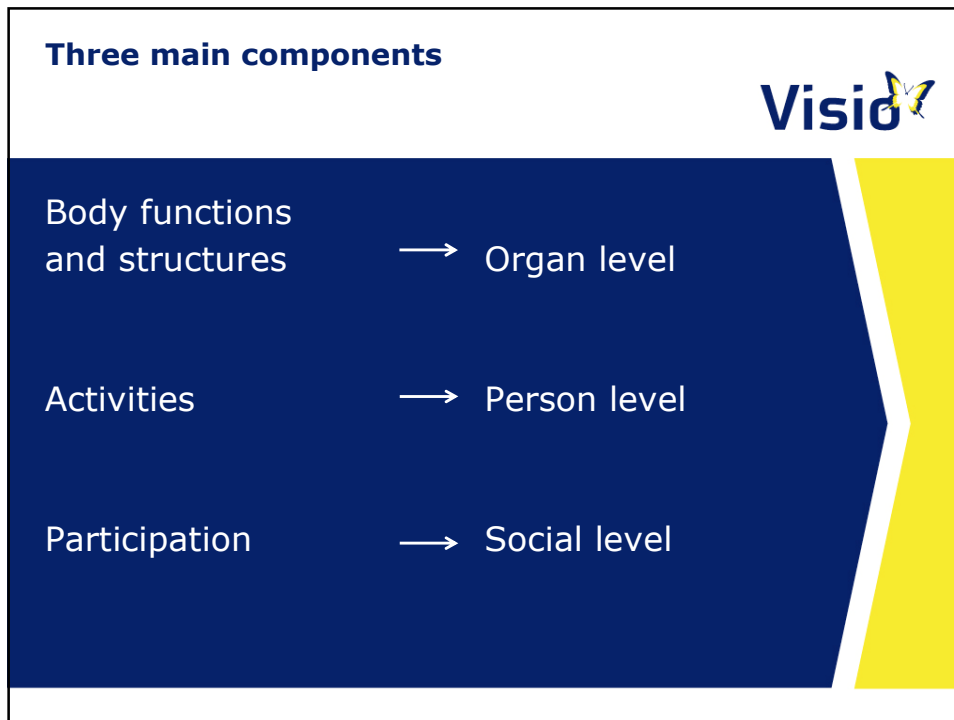
## History

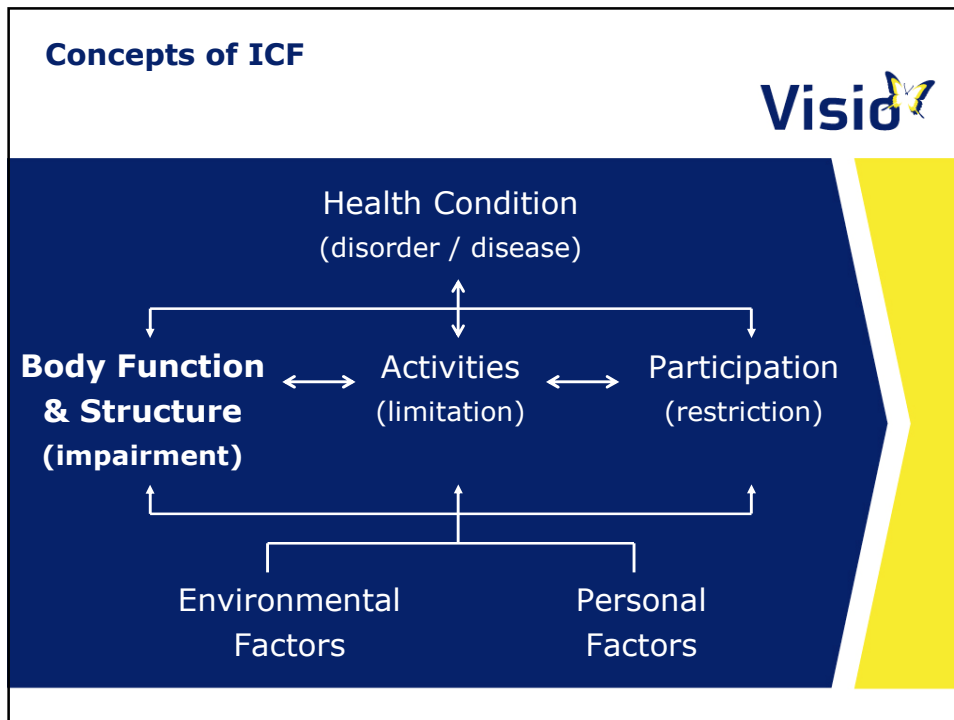


From **ICIDH** (1980)  
International Classification of Impairments  
Disabilities and Handicaps

To **ICF** (2001)  
International Classification of Functioning  
Disability and Health








### Functions and structures

Body functions are the physiological functions of body systems (including psychological functions)

Body structures are anatomical parts of the body such as organs, limbs and their components


Impairments are problems in body function or structure as a significant deviation or loss

**Functions**

**Visio **

- **Mental functions**
- **Sensory functions** and pain
- Voice and speech functions
- Functions of the cardiovascular, haematological, immunological and respiratory systems
- Functions of the digestive, metabolic and endocrine systems
- Genitourinary and reproductive functions
- Neuromusculoskeletal and movement related functions
- Functions of the skin and related structures

**Functions**

**Visio **

- **Mental functions**
- **Sensory functions** and pain
- Voice and speech functions
- Functions of the cardiovascular, haematological, immunological and respiratory systems
- Functions of the digestive, metabolic and endocrine systems
- Genitourinary and reproductive functions
- Neuromusculoskeletal and movement related functions
- Functions of the skin and related structures

} **visual system**

## Mental functions

- Consciousness
- Orientation (time, place, person)
- Intellectual (incl. retardation, dementia)
- Energy and drive functions
- Sleep
- Attention
- Memory
- Emotional functions
- Perceptual functions
- Higher level cognitive functions
- Language

## Functions related to vision

Visual sensory functions

Oculomotor functions

Visual perceptive / cognitive functions

Visual-motor functions

## Visual sensory functions

Visual acuity  
Visual fields  
Sensitivity to light  
Colour discrimination  
Contrast sensitivity  
Quality of images

## Oculomotor functions

Fixation  
Involuntary eye movements (nystagmus)  
Voluntary eye movements (cross-eyed)  
Accommodation

## Higher perceptual functions

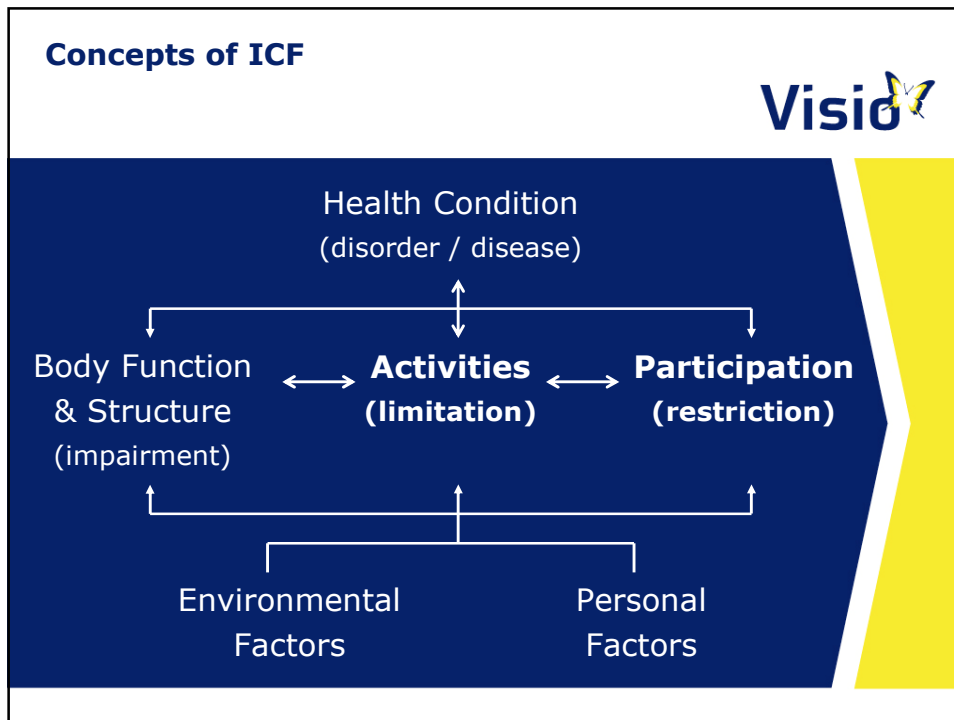


General perceptual processing  
Perception of spatial relations  
Recognition  
Interpretation / giving meaning

## Visuo-motor functions



Eye-hand coordination  
Eye-foot coordination  
Eye-body coordination



### Activities

Activity is the execution of a task or action by an individual

Activity limitations are difficulties an individual may have in executing activities

## Participation



Participation is involvement in a life situation

Participation restrictions are problems an individual may have in involvement in life situations

## Activities & Participation: 9 domains



1. Learning and applying knowledge
2. General tasks and demands
3. Communication
4. Mobility
5. Self care
6. Domestic life
7. Interpersonal interactions and relationships
8. Major life areas
9. Community, social and civic life

## Examples

### 1. Learning and applying knowledge

- Watching
- Listening
- Using other senses
- Learning to read
- Learning to write

## Examples

### 2. General tasks and demands

- Undertaking a single task
- Undertaking multiple tasks

## Examples

### 3. Communication

- Communicating with receiving spoken messages
- Communicating with receiving non-verbal messages
- Use of communication equipment and techniques

## Examples

### 4. Mobility

- Lifting and carrying objects
- Walking
- Moving around using equipment
- Using transportation

**Examples**

**Visio **

5. Self care

- Washing oneself
- Toileting
- Dressing
- Eating
- Drinking

**Examples**

**Visio **

6. Domestic life

- Acquisition of goods and services
- Preparation of meals
- Doing housework
- Assisting others

## Examples

### 7. Interpersonal interactions and relationships

- Relating with strangers
- Formal relationships
- Informal social relationships
- Family relationships
- Intimate relationships

## Examples

### 8. Major life areas

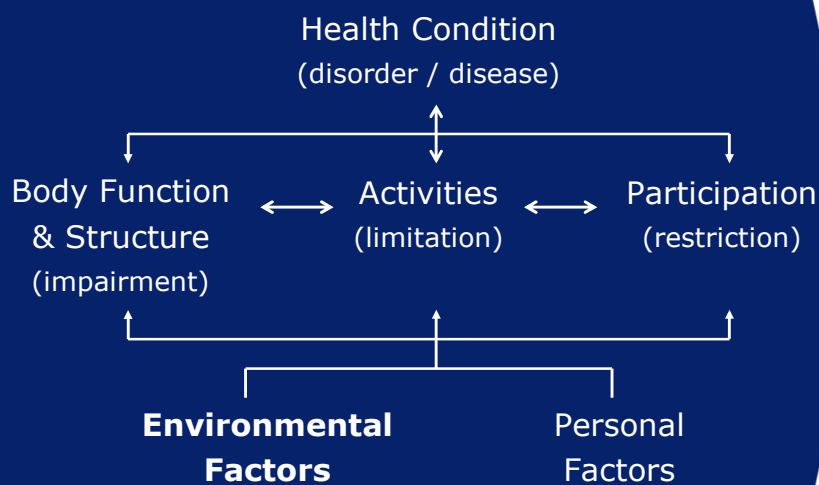
- Education
- Remunerative employment
- Basic economic transactions
- Economic self-sufficiency

## Examples


### 9. Community, social and civic life

- Community life
- Recreation and leisure
- Religion and spirituality
- Human rights
- Political life and citizenship

## Concepts of ICF




**Environmental factors**

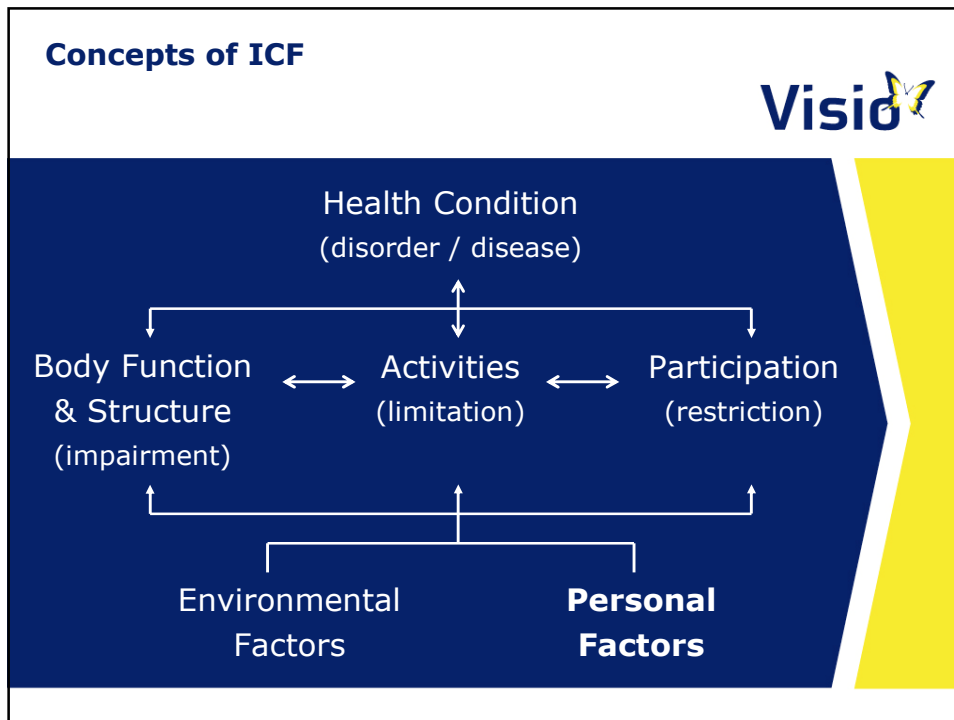
**Visio** 

- Products and technology
- Natural environment and human made changes to environment
- Support and relationships
- Attitudes
- Services, systems and policies

**Environmental factors**


**Visio** 

▪ Products and technology	→ Physical environment
▪ Natural environment and human made changes to environment	
▪ Support and relationships	→ Social environment
▪ Attitudes	
▪ Services, systems and policies	→ Societal environment




- ### Personal factors
- 
- Gender
  - Age
  - Other health conditions
  - Coping style
  - Social background
  - Education / Profession
  - Past experiences
  - Character style
  - Life style
  - Ethnic / Cultural background
- The list is presented on a dark blue background with a yellow arrow-shaped graphic on the right side.

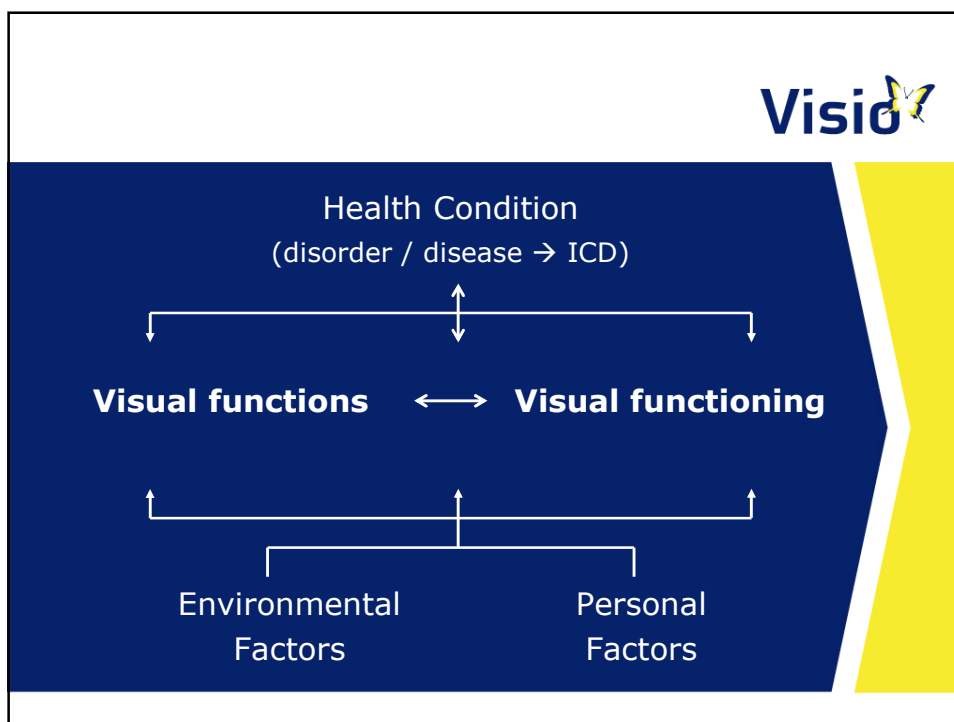
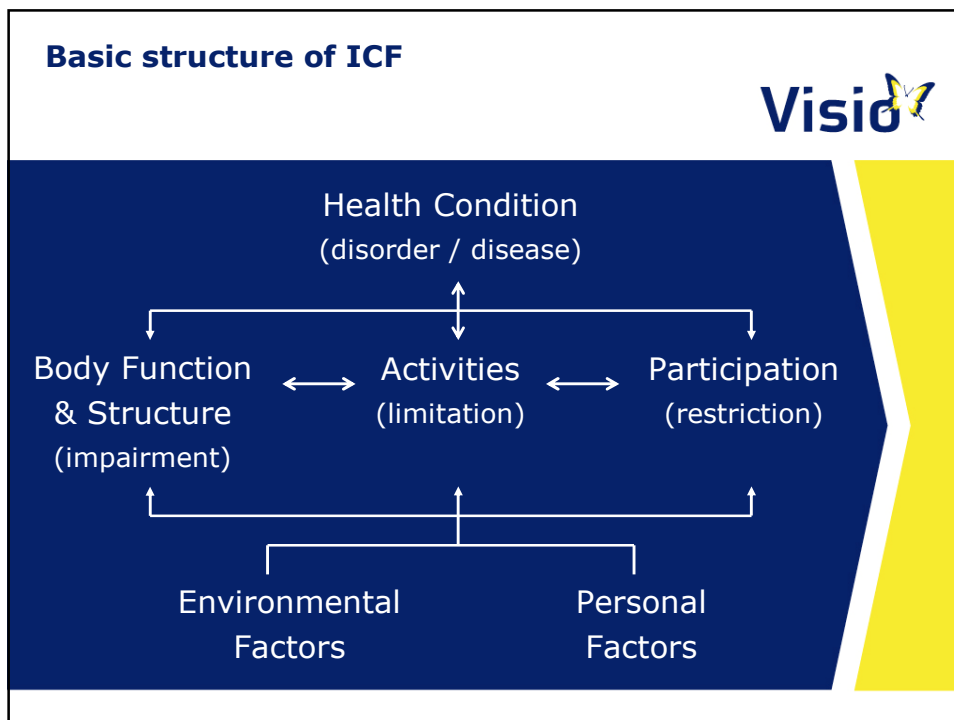
**Scheme for a client's report**

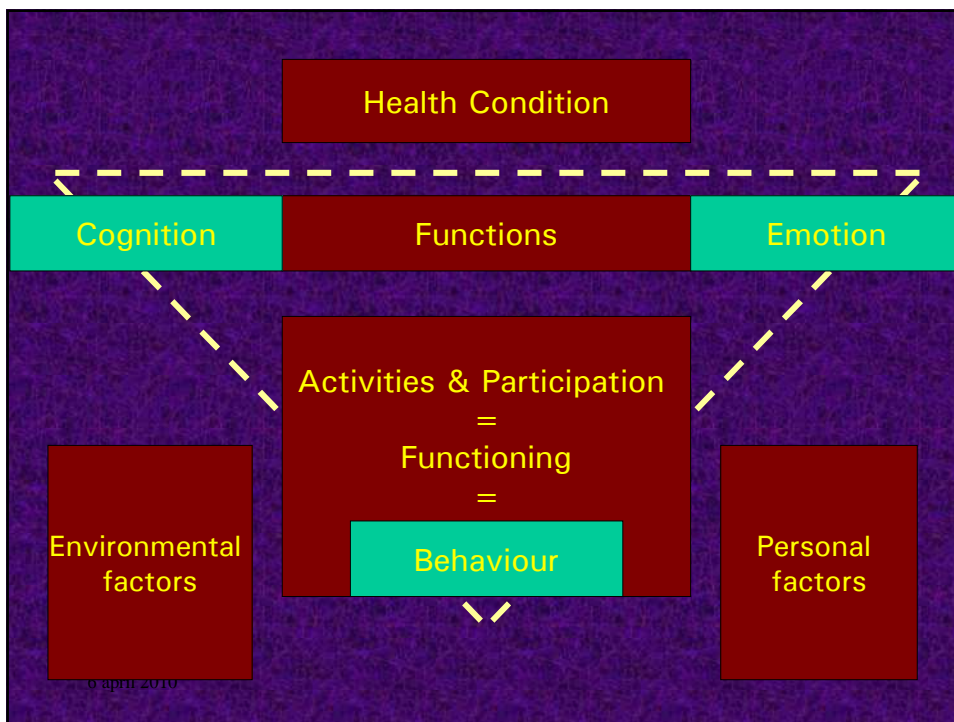
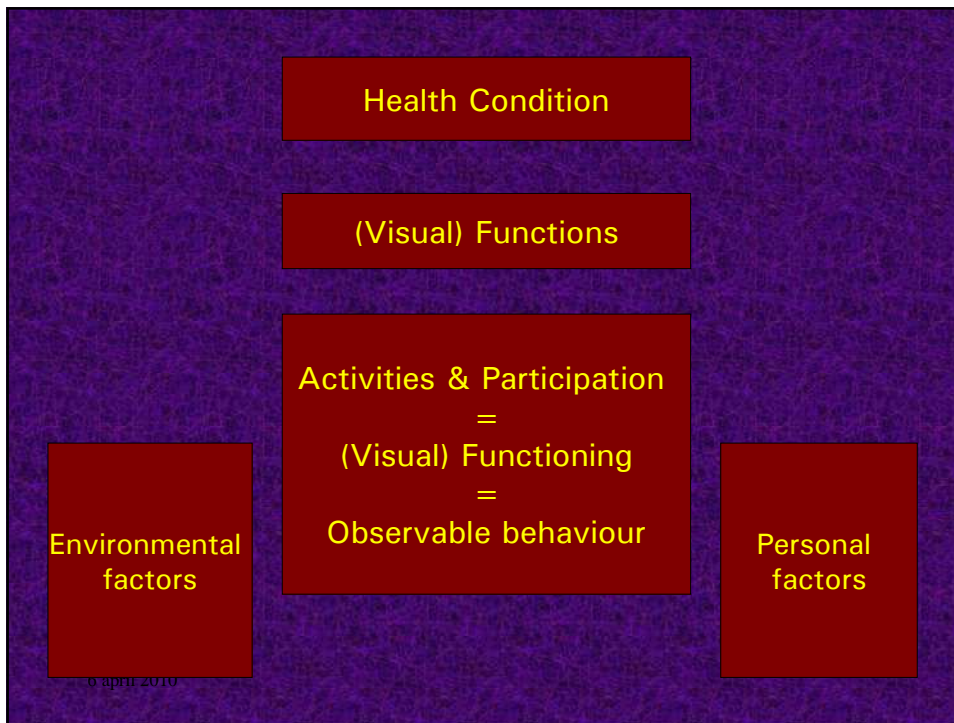
**Visio** 

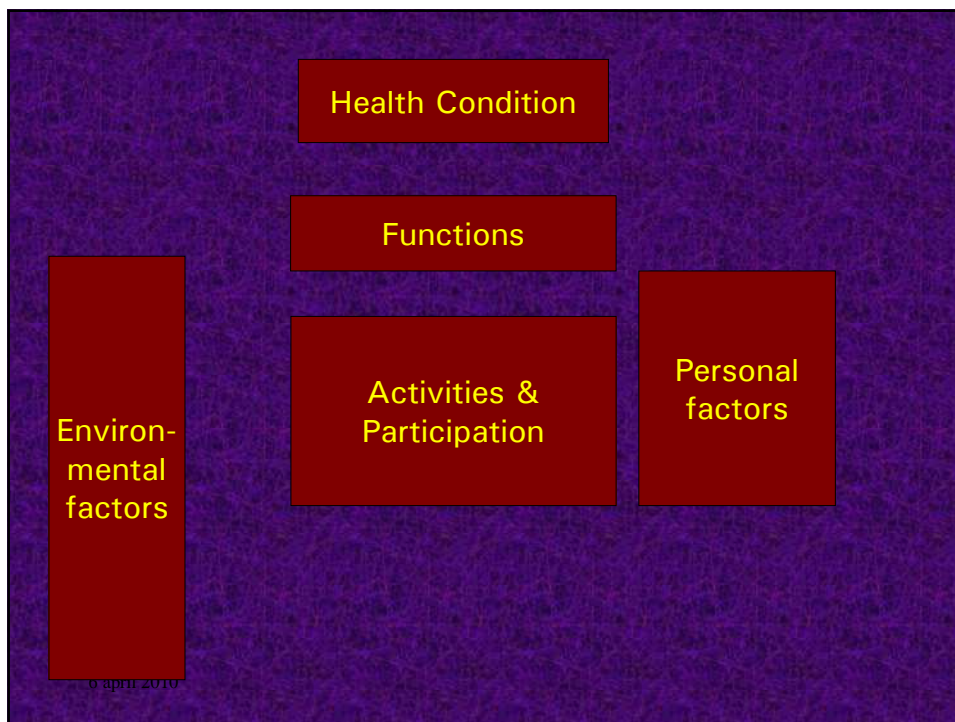
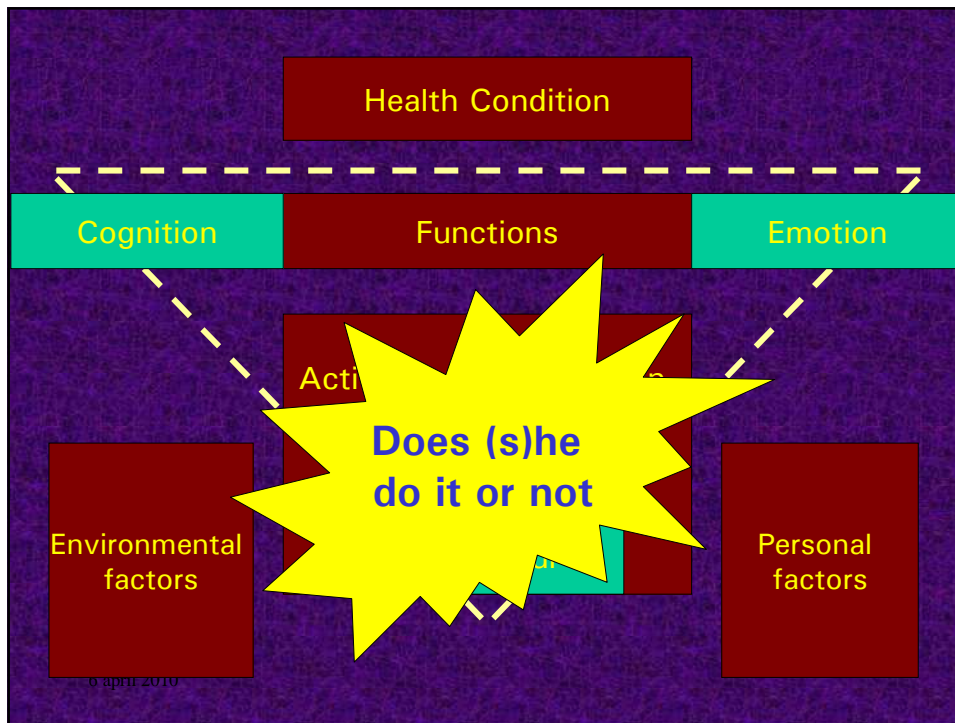
- Health condition
- Functions / anatomical structures
- Activities & Participation
  - 9 domains
- Environmental factors
  - Physical
  - Social
  - Societal
- Personal factors

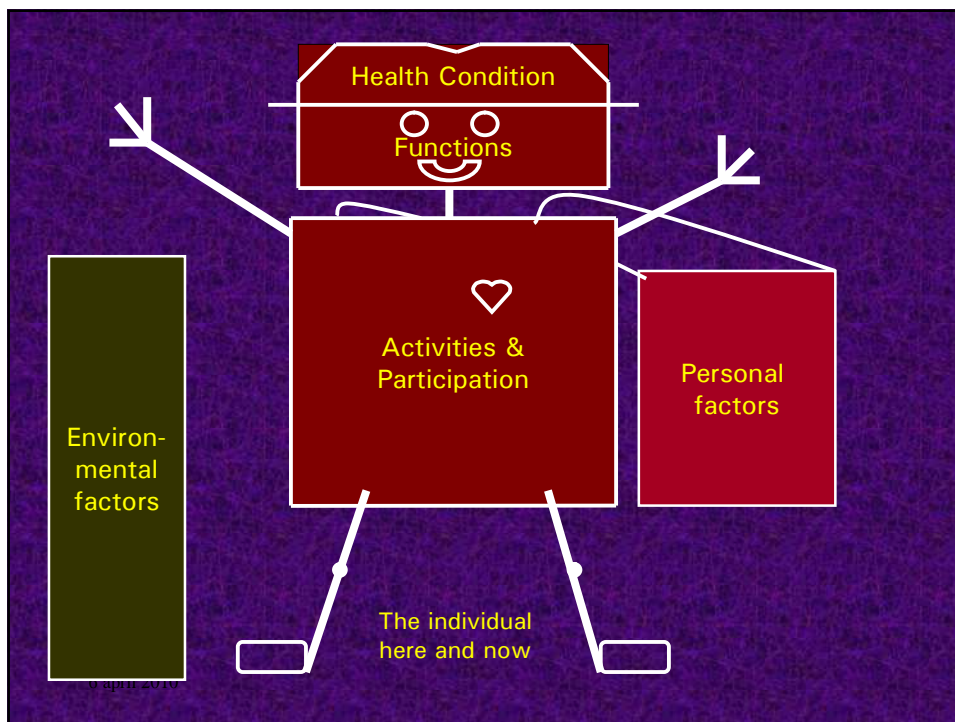
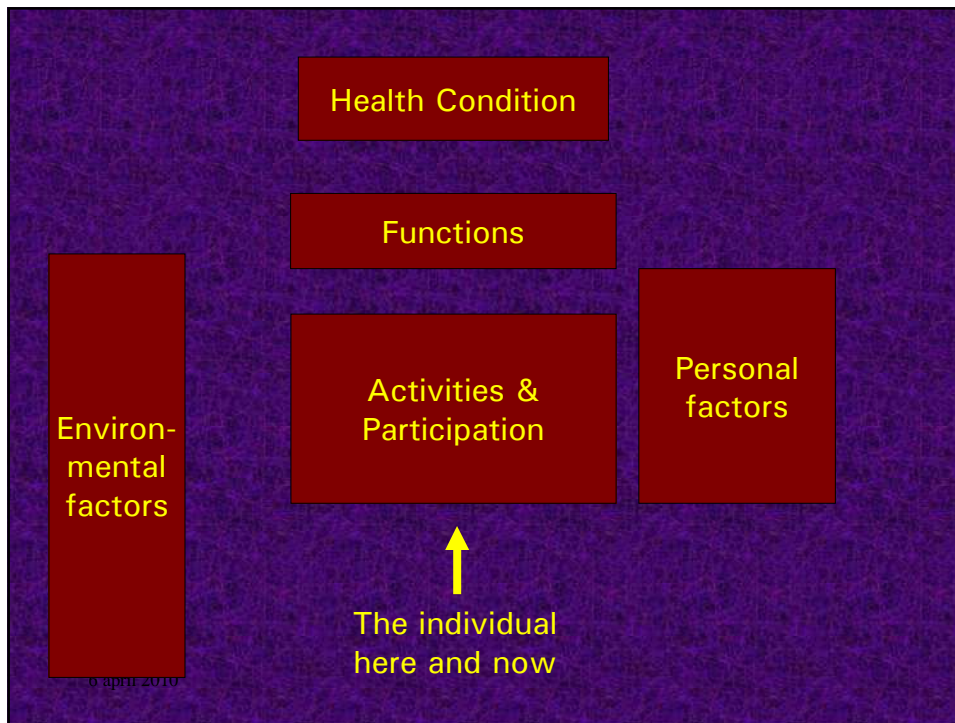
**Visio** 

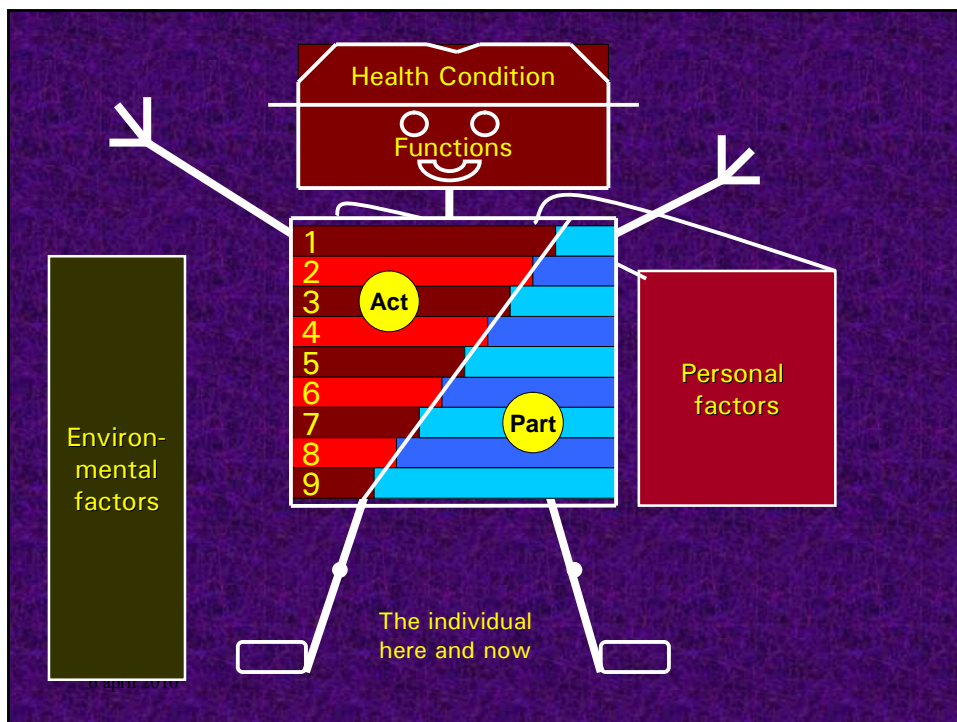
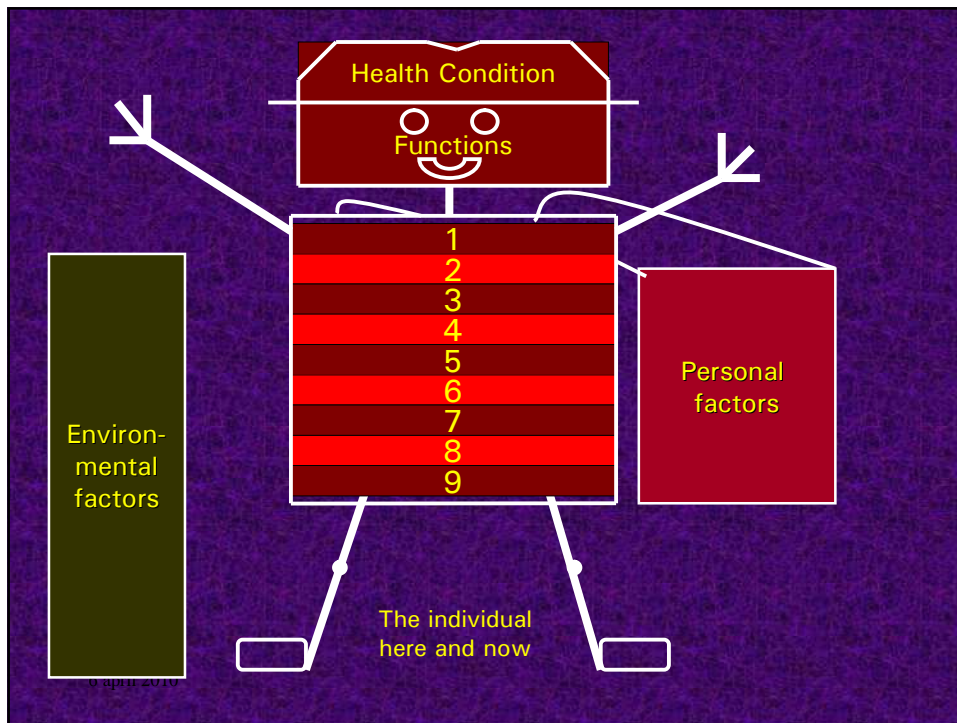
**[ ai see ef ]  
for dummies**

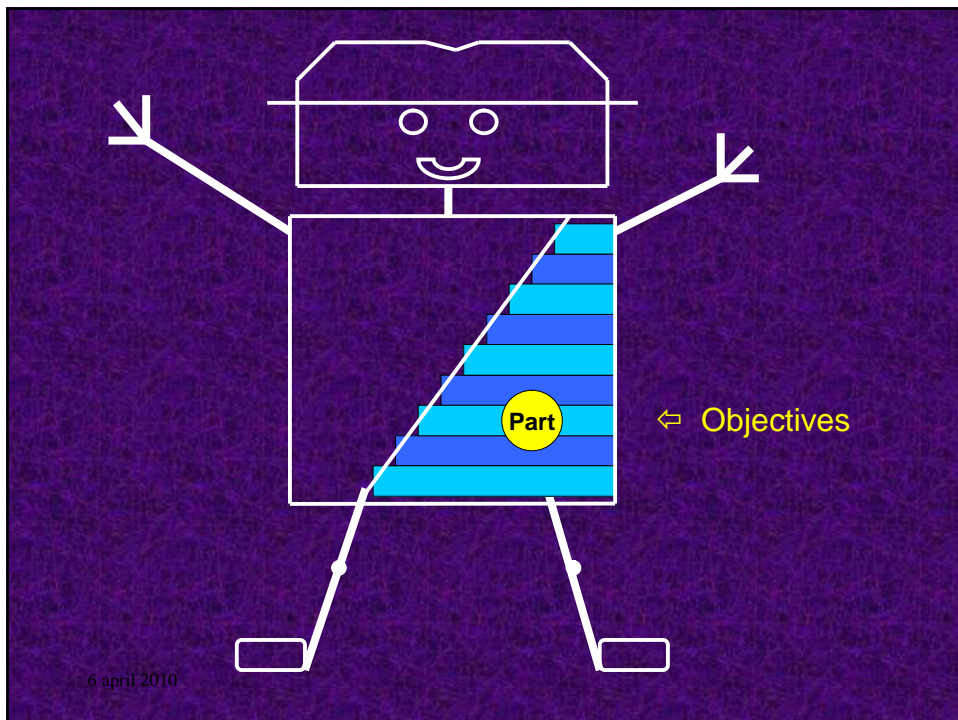
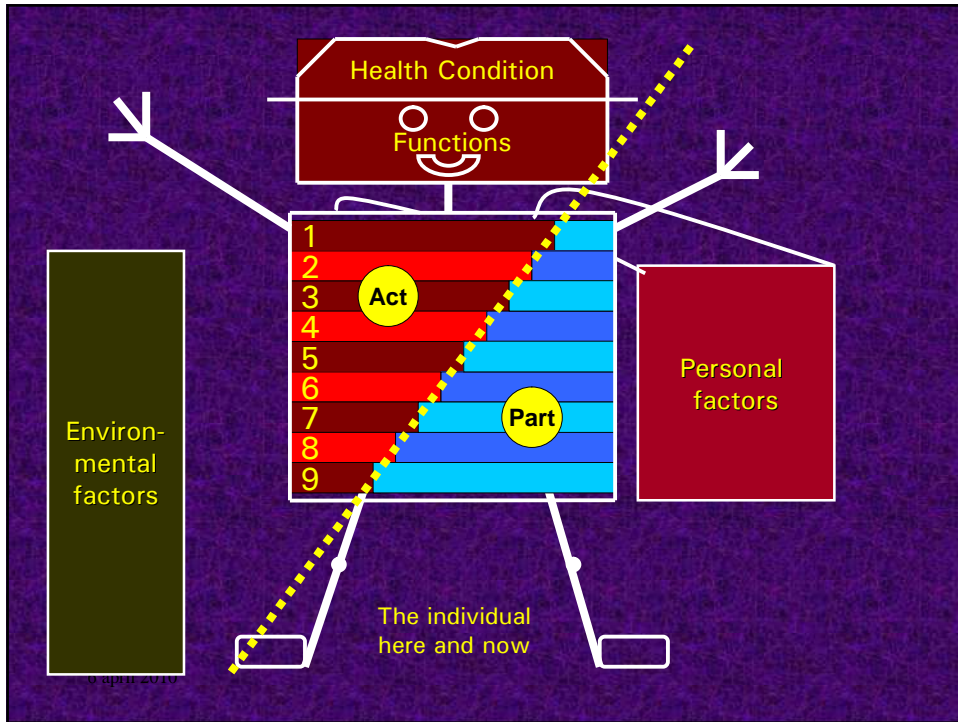


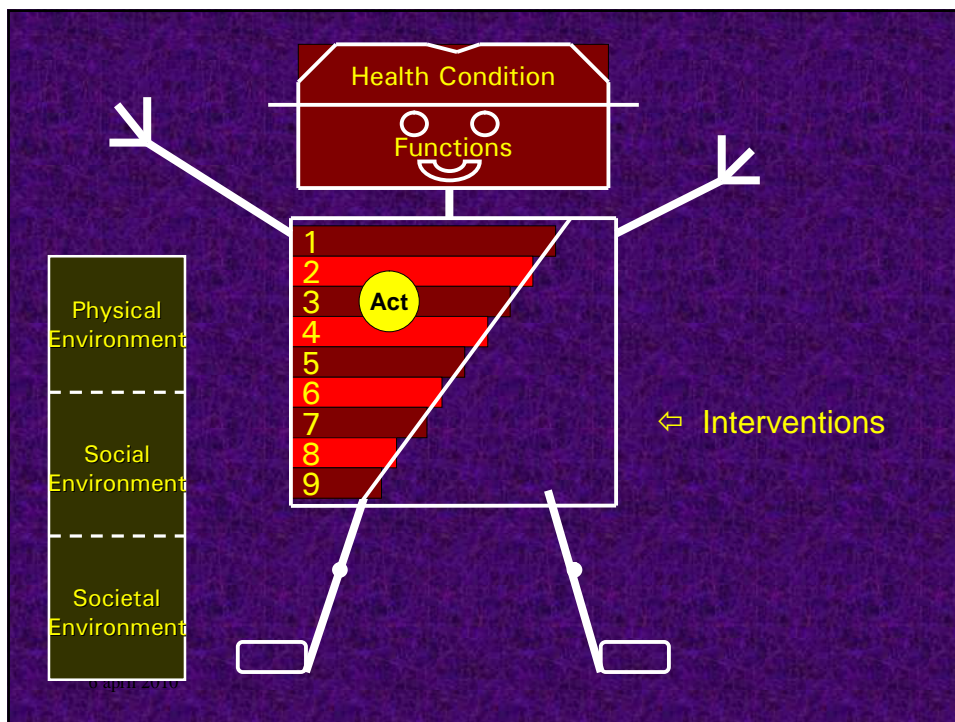
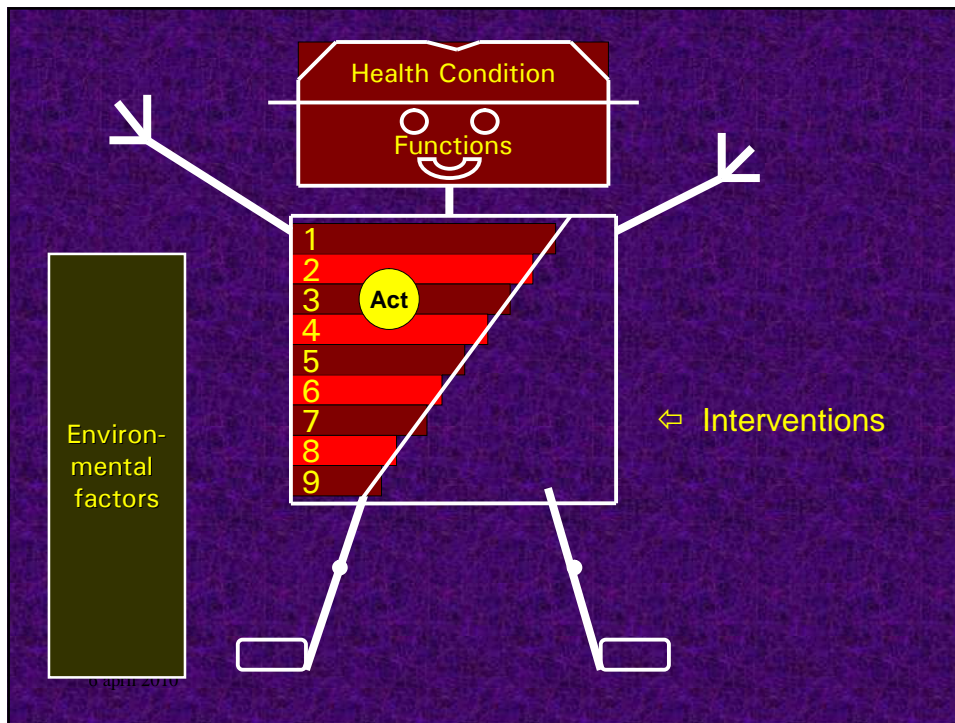


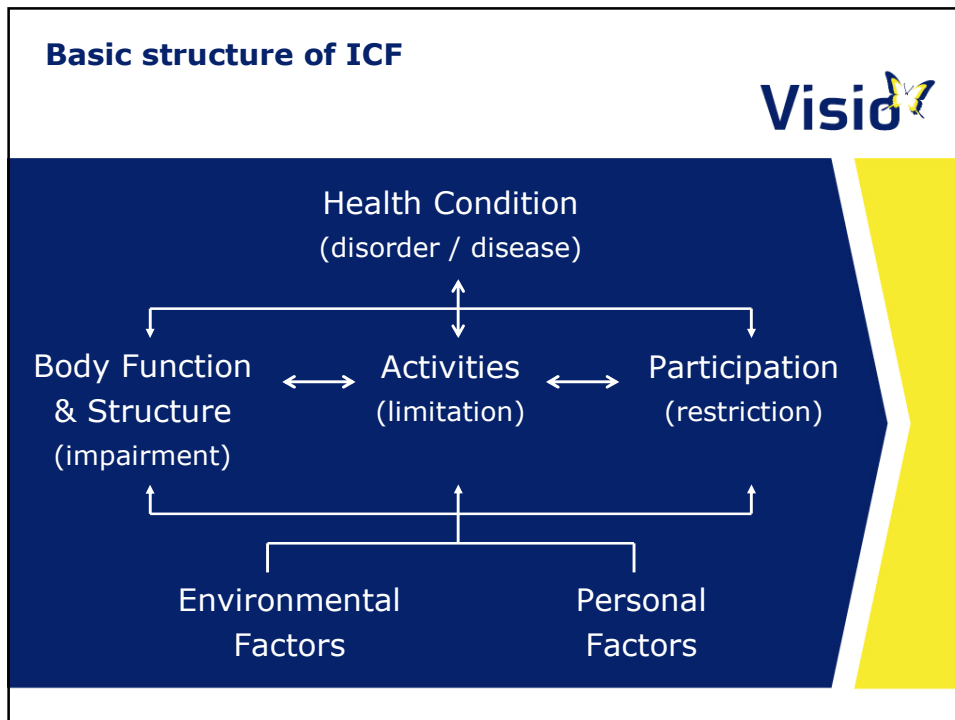






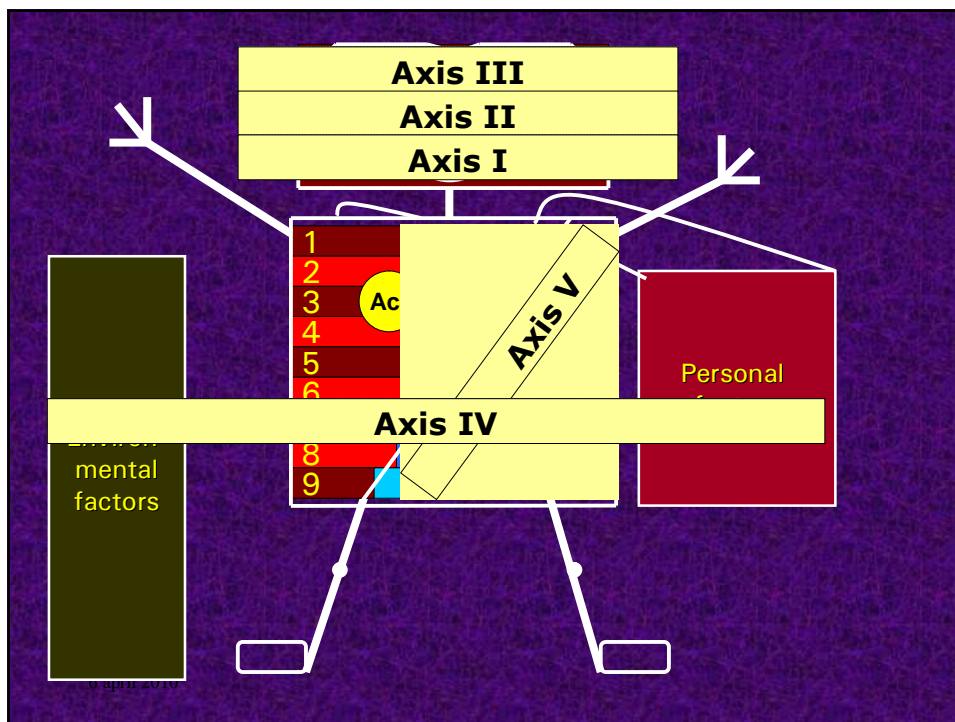






## DSM-IV-TR axes

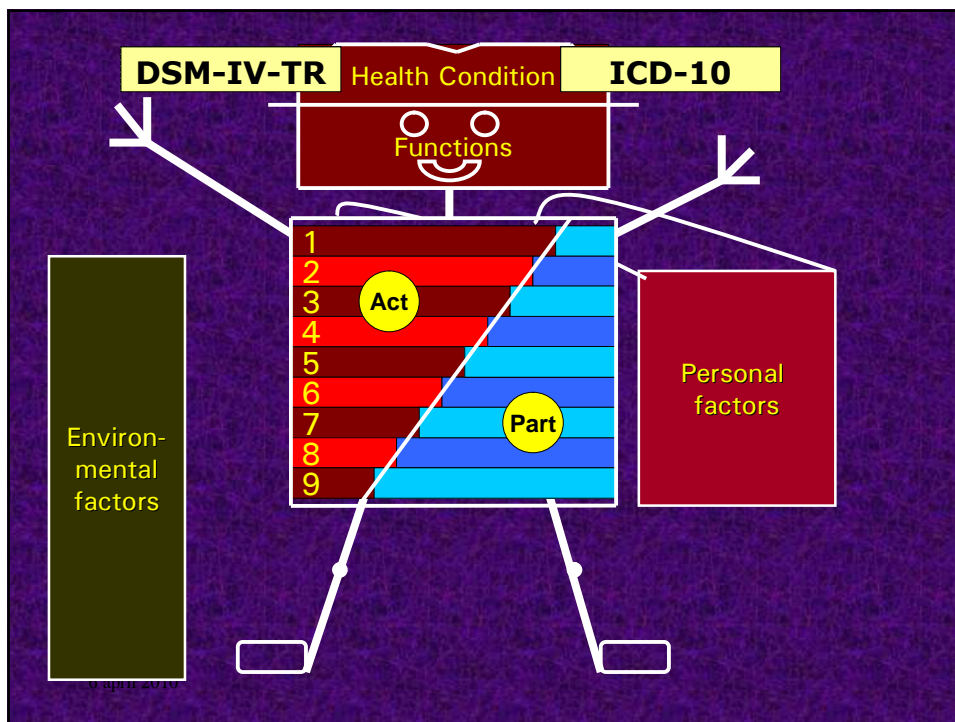
- **Axis I:** major mental disorders, developmental disorders and learning disabilities
- **Axis II:** underlying pervasive or personality conditions, as well as mental retardation
- **Axis III:** any non-psychiatric medical condition
- **Axis IV:** social functioning and impact of symptoms
- **Axis V:** Global assessment of functioning



## DSM and ICF



DSM and ICD are both classification systems for diagnoses (of disorders and diseases) at the level of the health condition. So, DSM is equivalent to ICD and not to ICF.



## Conclusion



ICF is a great help in our  
interdisciplinary rehabilitation work

ICF and DSM are not conflicting  
(assessment vs. diagnosis) but  
supplementary.

## Conclusion




The assessment of a psychologist mainly  
concerns the components of FUNCTIONS  
and PERSONAL FACTORS

Psychotherapy is aimed at mental  
FUNCTIONS

Counselling is aimed at PARTICIPATION

**Discussion**



Questions ?

Remarks ?

Experiences to exchange ?

Comments ?



Thank you